

CUMBERLAND COUNTY

ANDERSONTOWN WOODS

COMMERCIAL
- DOG CAMP
- CREMATORIUM
- CEMETERY
- STORE

LEGEND
EXISTING LAND USE

- SUBURBAN RESIDENTIAL USES
- RURAL RESIDENTIAL/AGRICULTURAL USES
- WOODS/STEEP SLOPES/RURAL RESIDENTIAL USES
- COMMERCIAL USES
- PUBLIC-SEMI PUBLIC USES
- INSTITUTIONAL USES

SYMBOLS

- TOWNSHIP LINE
- WATERCOURSE
- PUBLIC STREET
- PRIVATE STREET

GRAPHIC SCALE
2200' 1100' 0' 2200'
SCALE: 1"=2200'
CUMBERLAND COUNTY

MESSIAH COLLEGE

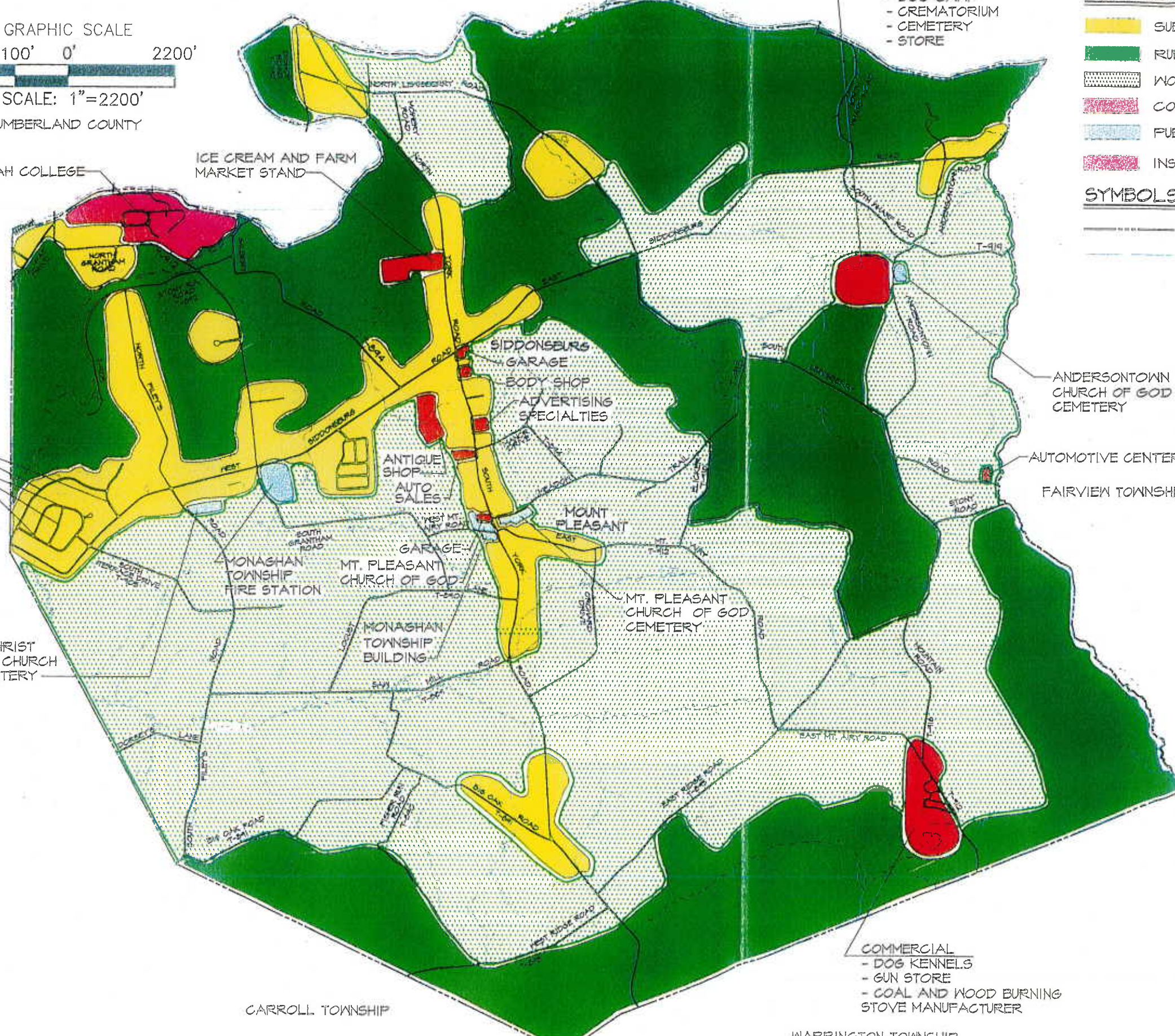
ICE CREAM AND FARM MARKET STAND

SUMMER DRIVE
AUTUMN DRIVE
NORTH SEASONS DRIVE
WINTER DRIVE
SOUTH SEASONS DRIVE

FILEY'S CHRIST LUTHERAN CHURCH AND CEMETERY

CARROLL TOWNSHIP

WARRINGTON TOWNSHIP



ANDERSONTOWN CHURCH OF GOD CEMETERY

AUTOMOTIVE CENTER

FAIRVIEW TOWNSHIP

MONASHAN TOWNSHIP FIRE STATION

MT. PLEASANT CHURCH OF GOD

MONASHAN TOWNSHIP BUILDING

MT. PLEASANT CHURCH OF GOD CEMETERY

COMMERCIAL
- DOG KENNELS
- GUN STORE
- COAL AND WOOD BURNING STOVE MANUFACTURER

GENERALIZED EXISTING LAND USE CHARACTERIZATION MAP OF MONAGHAN TOWNSHIP

York County, Pennsylvania
July, 1997



GRAPHIC SCALE
 2200' 1100' 0' 2200'
 SCALE: 1"=2200'
 CUMBERLAND COUNTY

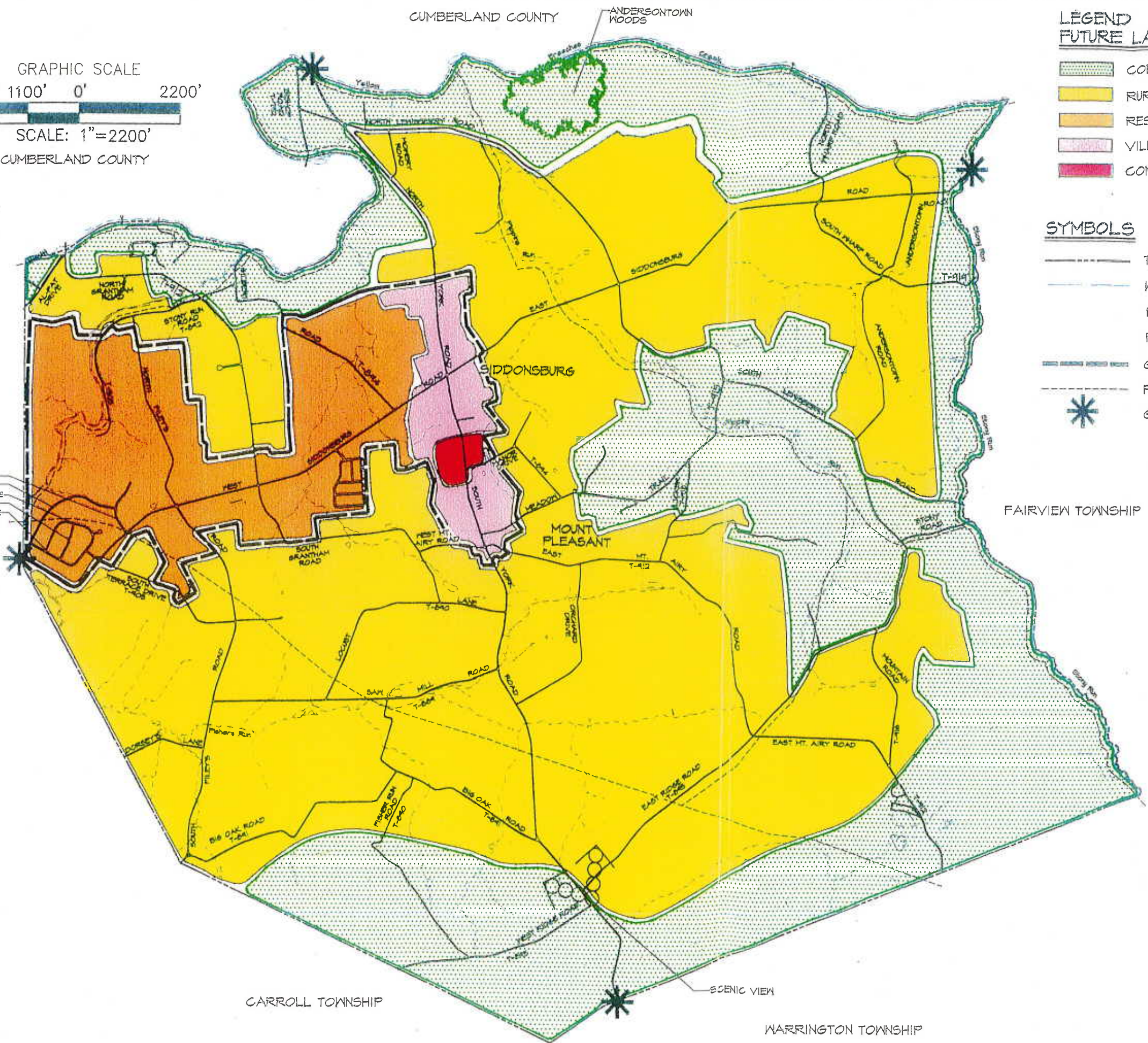
LEGEND
FUTURE LAND USE

-  CONSERVATION
-  RURAL RESIDENTIAL
-  RESIDENTIAL
-  VILLAGE
-  COMMERCIAL

SYMBOLS

-  TOWNSHIP LINE
-  WATERCOURSE
-  PUBLIC STREET
-  PRIVATE STREET
-  GROWTH BOUNDARY
-  PEDESTRIAN PATH/OPEN SPACE LINKAGES
-  GATEWAYS

SUMMER DRIVE
 AUTUMN DRIVE
 NORTH SEASONS DRIVE
 WINTER DRIVE
 SOUTH SEASONS DRIVE



FUTURE LAND USE SCENARIO MAP
 OF
MONAGHAN TOWNSHIP
 York County, Pennsylvania
 September, 1998

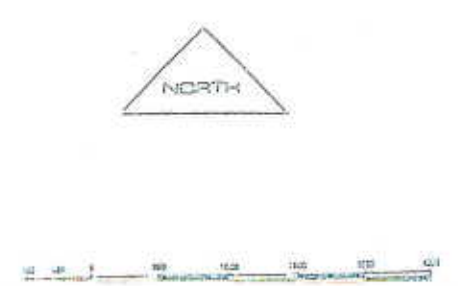


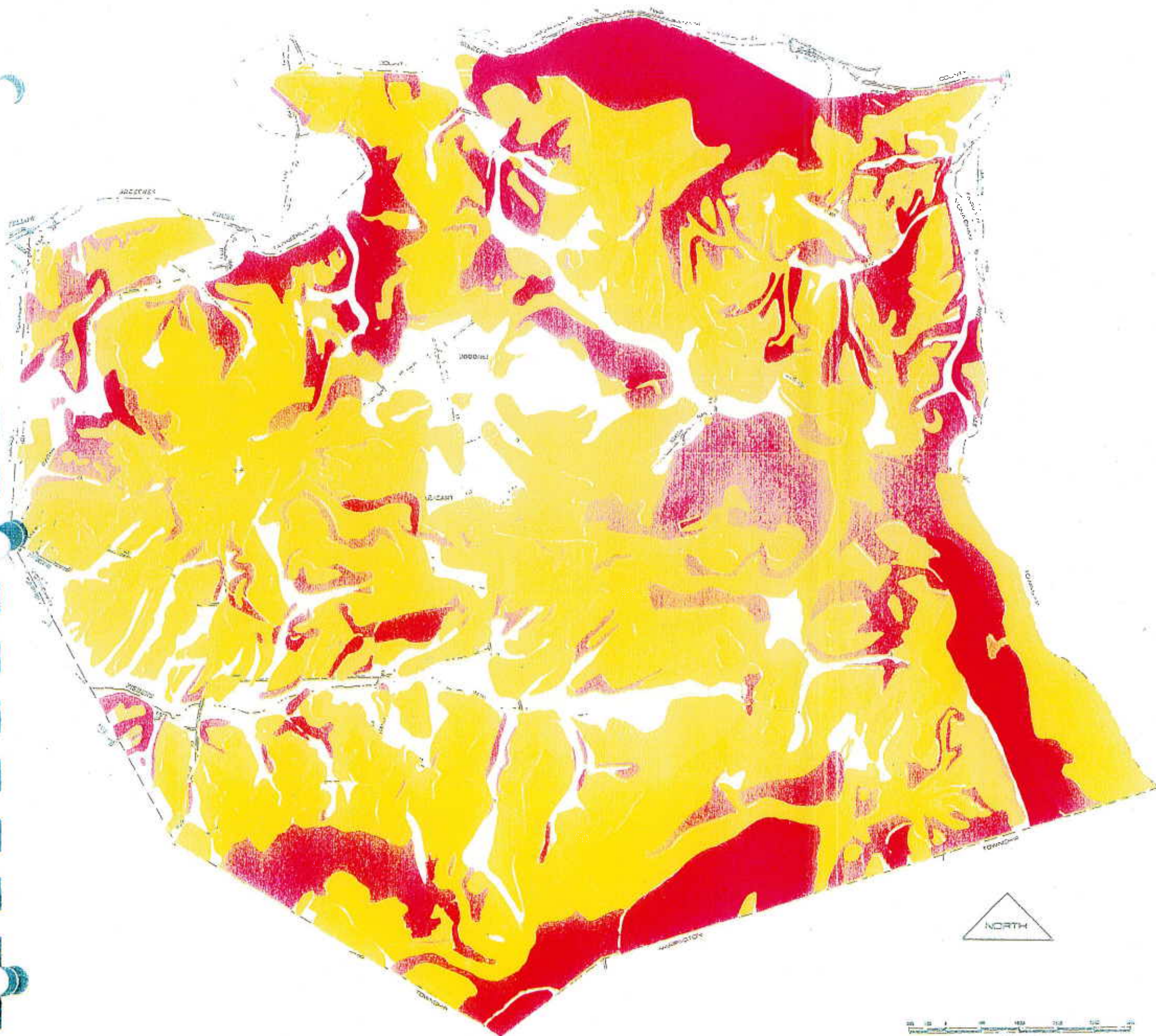
23 East 1st Street, York, PA 17403
 Tel: 717/765-1111
 Fax: 717/765-1112
 www.hrc.org



- MAP 1
GEOLOGY
- SANDSTONE and SHALE
 - Gettysburg Shale
 - Helderberg Conglomerate Member
 - Limestone Conglomerate
 - Diabase Baked Rock

MONAGHAN TOWNSHIP
York County, Pennsylvania



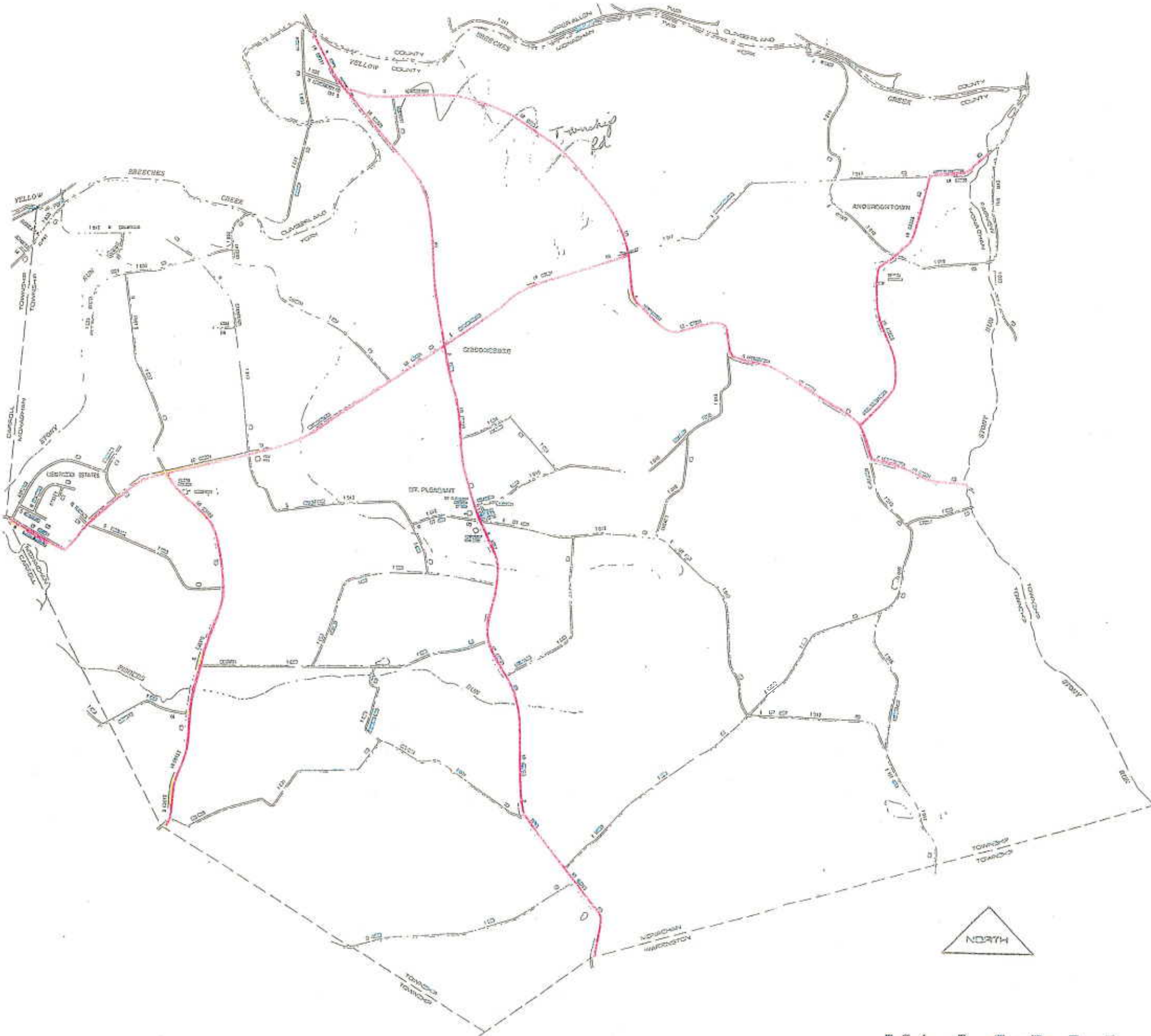


- MAP 4
SLOPES
- 0 - 3%
 - 3 - 8%
 - 8 - 15%
 - 15 - 25%
 - Over 25%

MONAGHAN TOWNSHIP
York County, Pennsylvania



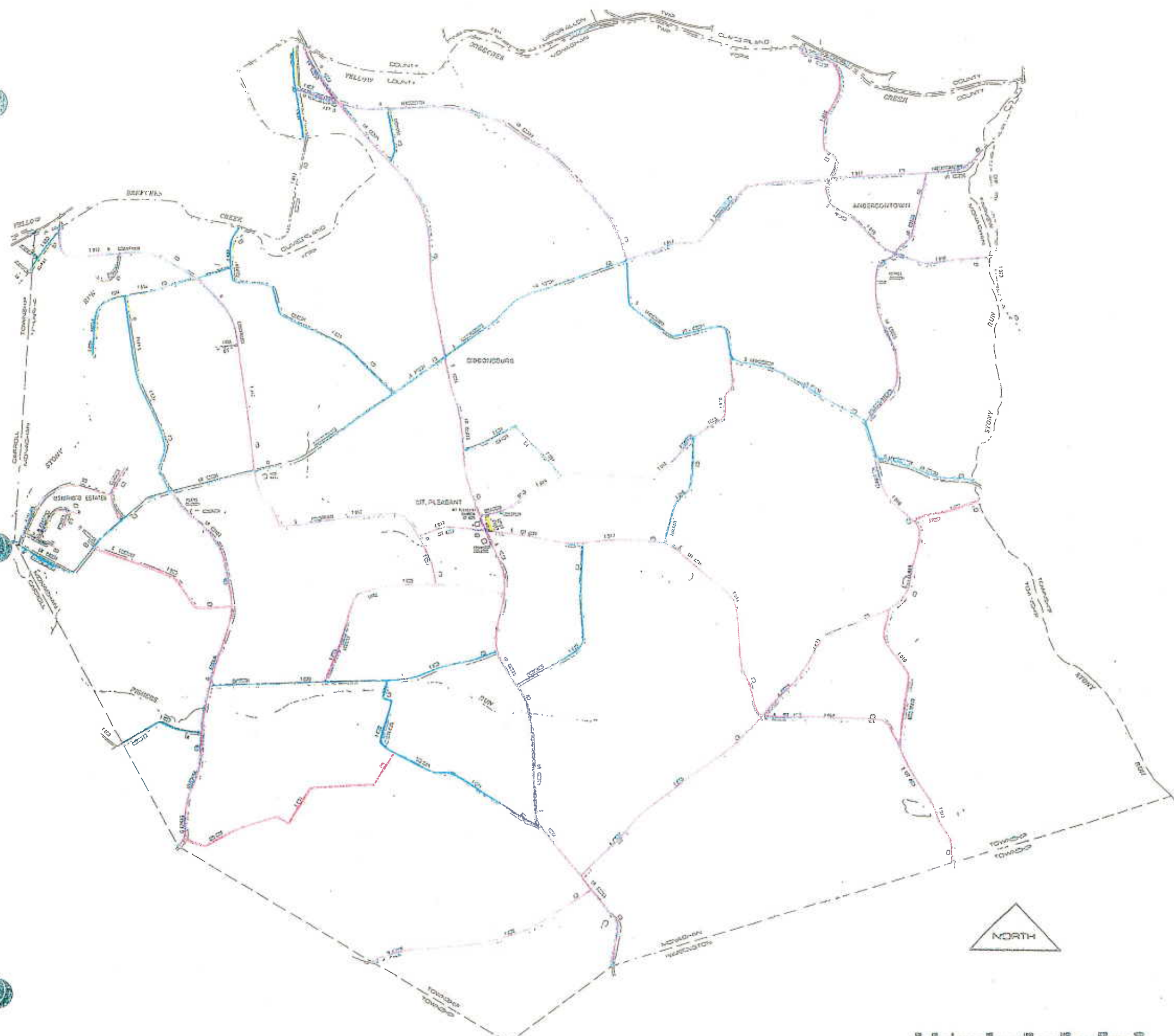
MAP 10
ROAD JURISDICTION
State Roads



MONAGHAN TOWNSHIP
York County, Pennsylvania

MAP 11
 CARTWAY WIDTHS

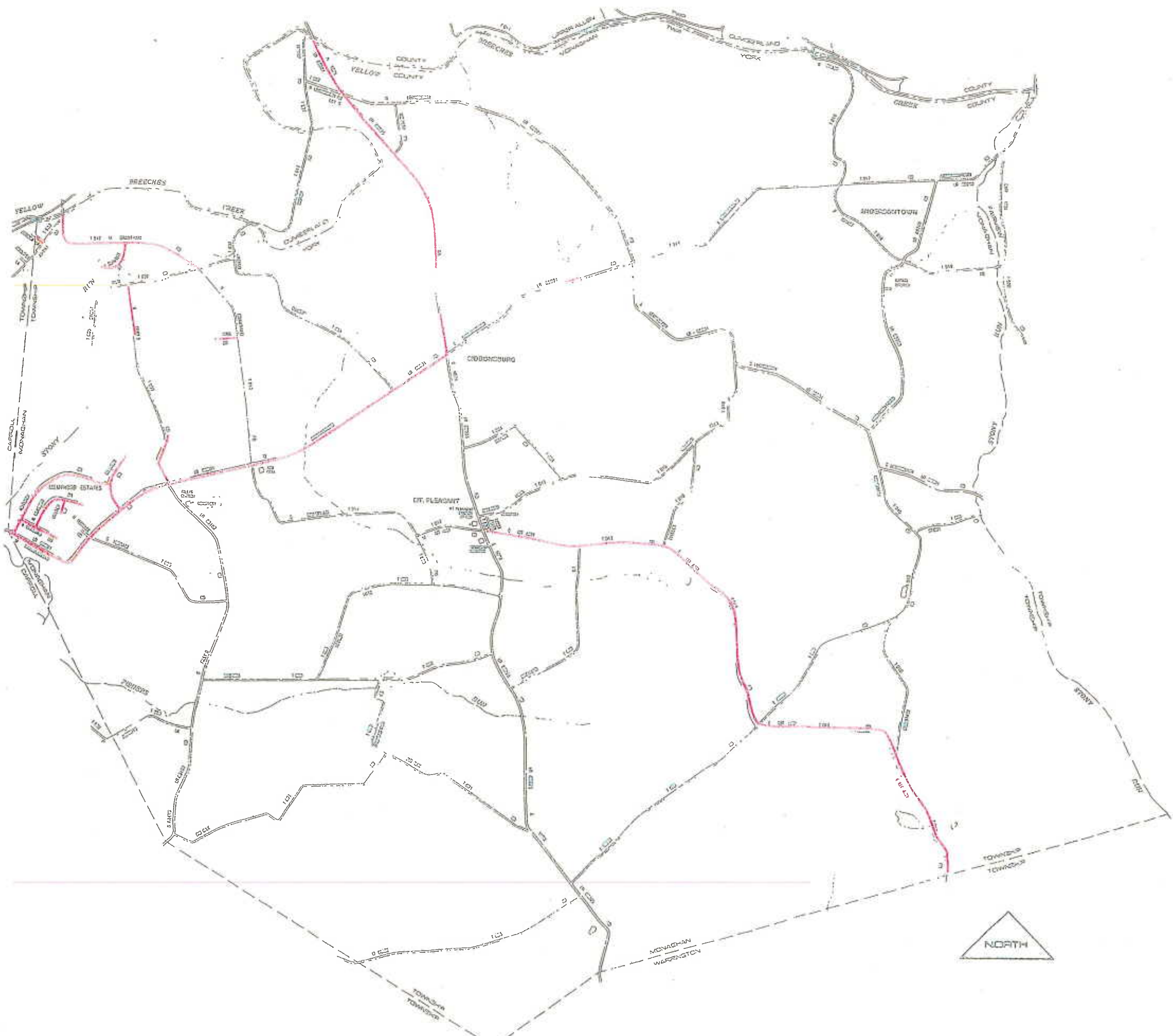
- 10 - 12 Feet
- 12 - 14 Feet
- 14 - 16 Feet
- 16 - 18 Feet
- 18 - over Feet



MONAGHAN TOWNSHIP
 York County, Pennsylvania



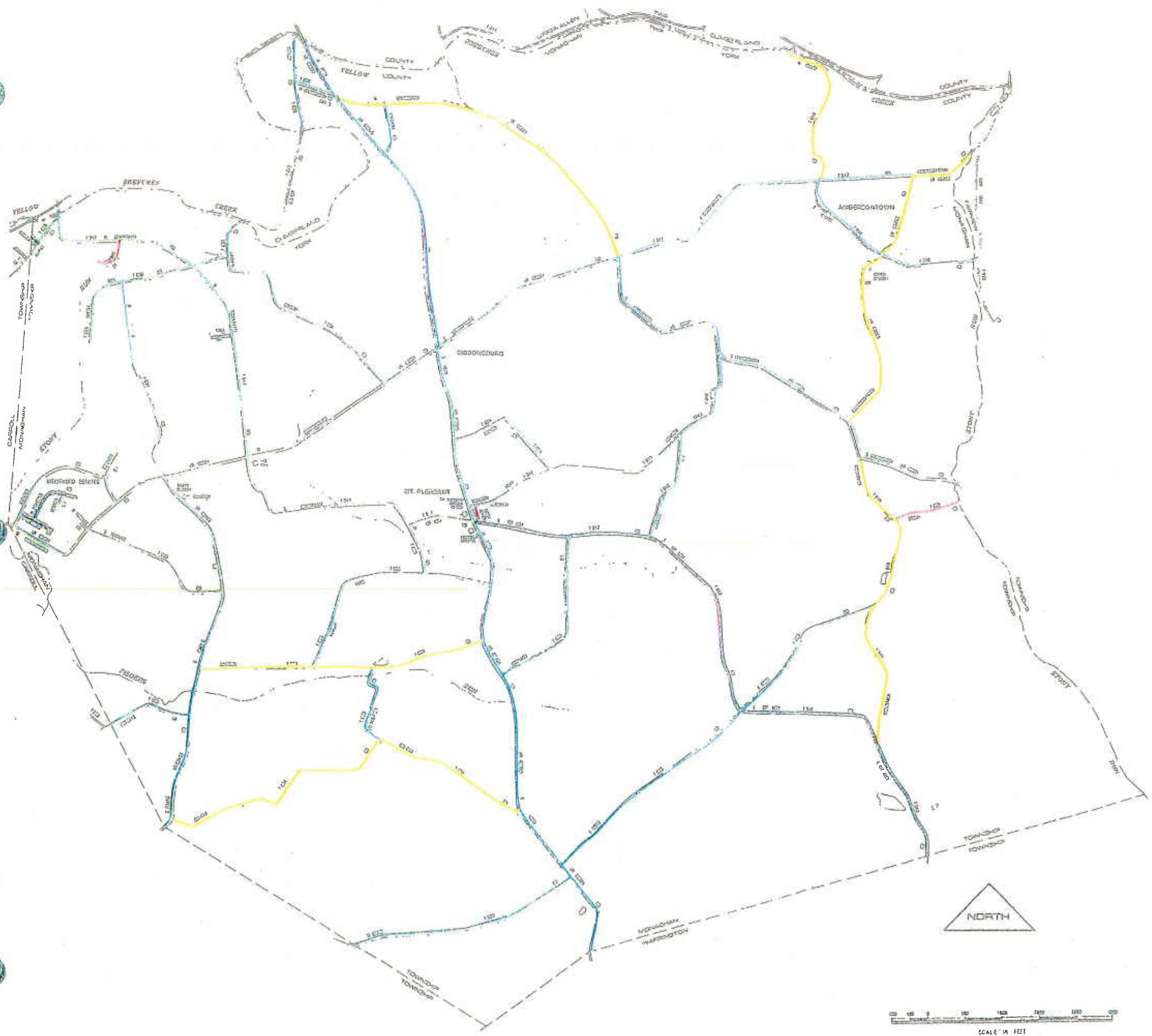
MAP 12
ROAD SURFACES
(Asphalt)



MONAGHAN TOWNSHIP
York County, Pennsylvania

MAP 13
GENERAL ROAD CONDITIONS

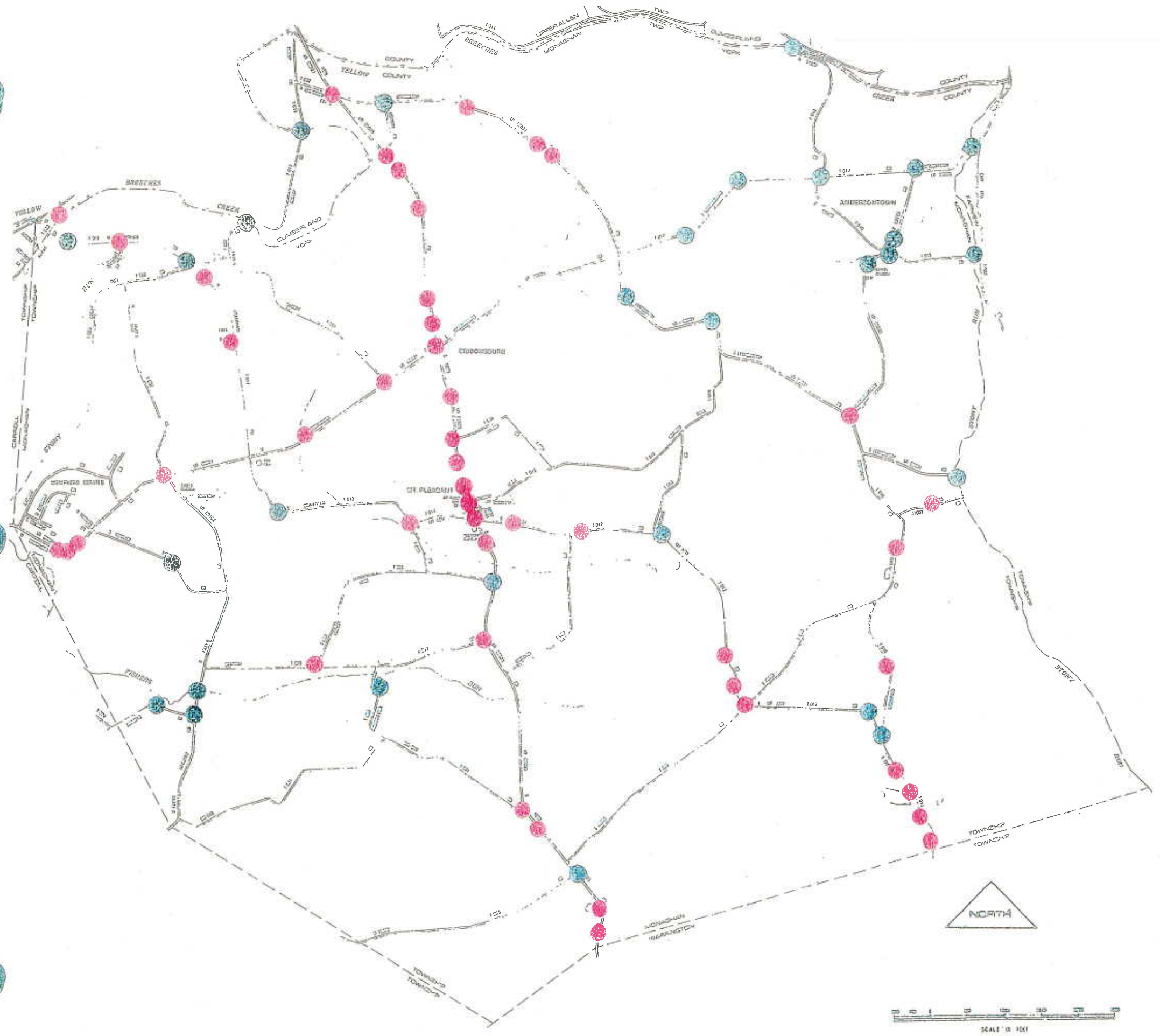
- Good
- - - Good - Fair
- ... Fair
- Fair - Poor
- Poor



MONAGHAN TOWNSHIP
York County, Pennsylvania

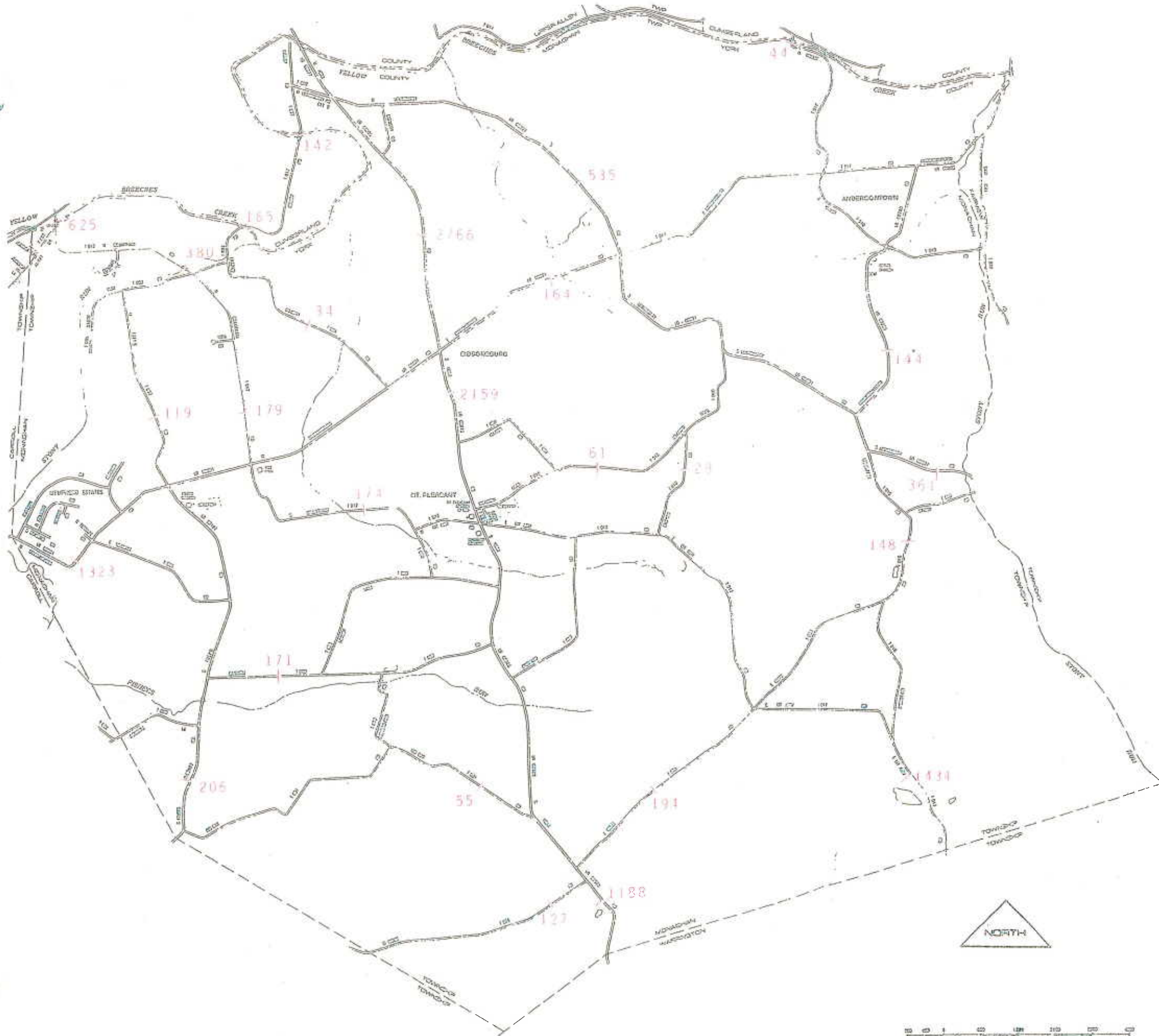
MAP 14
HAZARDOUS LOCATIONS

- Hazardous
- Potentially Hazardous



MONAGHAN TOWNSHIP
York County, Pennsylvania




MAP 15
TRAFFIC VOLUMES 1985
Average Volumes For A 24 Hour Day

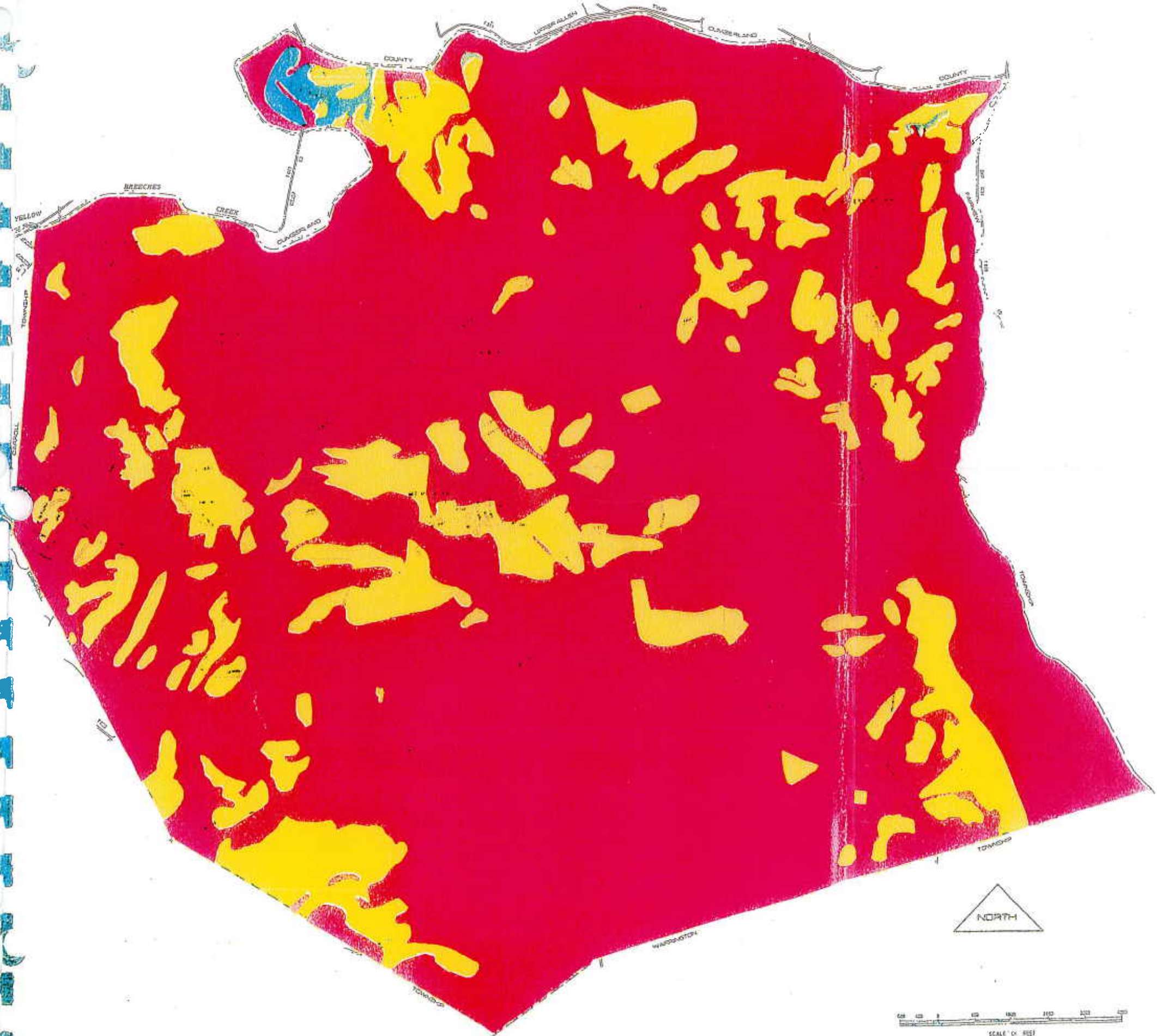


MONAGHAN TOWNSHIP
York County, Pennsylvania



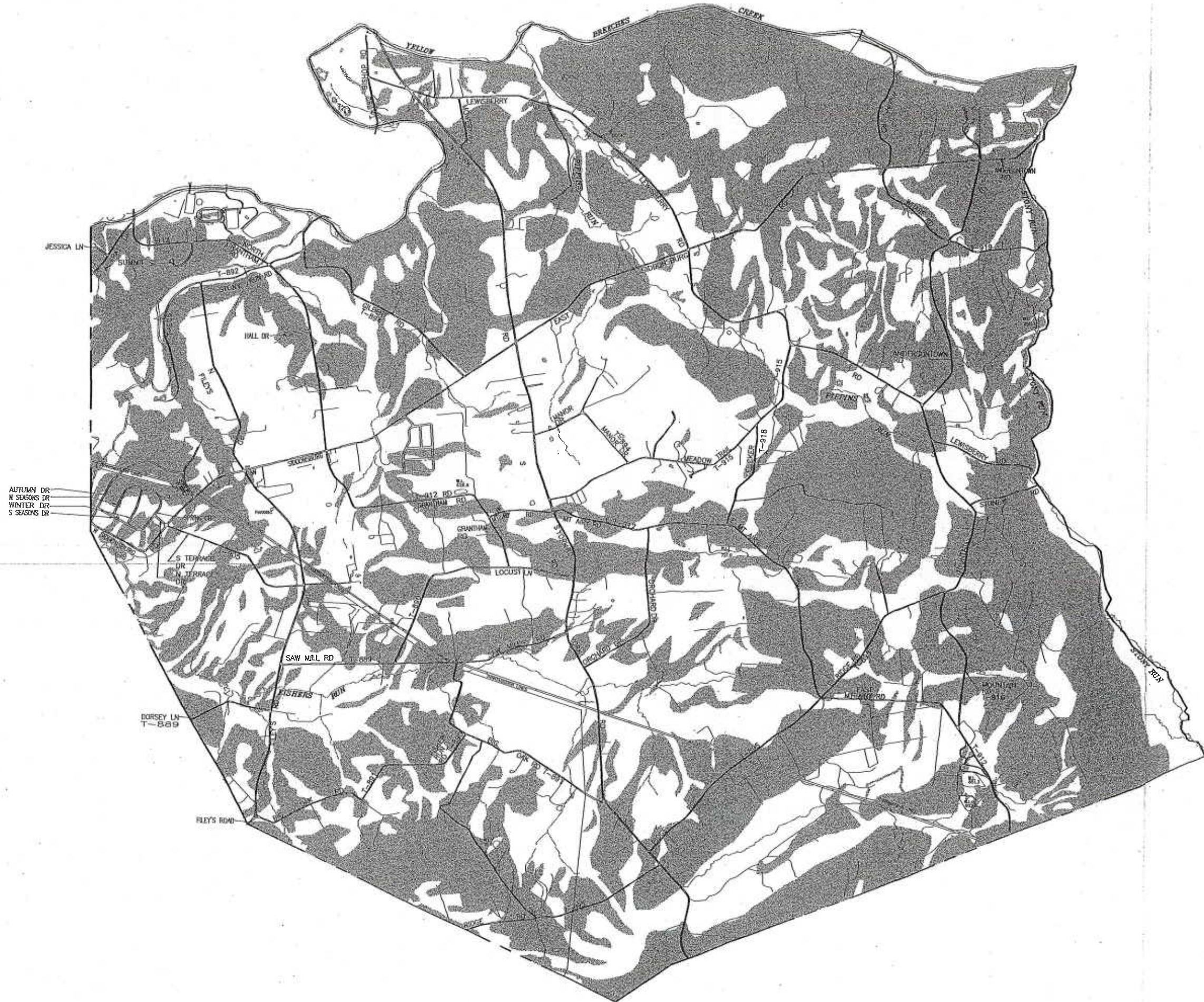
MAP 20
SOIL LIMITATIONS FOR ON-SITE SEWAGE DISPOSAL

-  None To Slight
-  Moderate
-  Severe

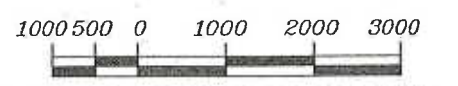
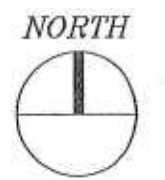


MONAGHAN TOWNSHIP
York County, Pennsylvania





■ SLOPES ABOVE 15 PERCENT



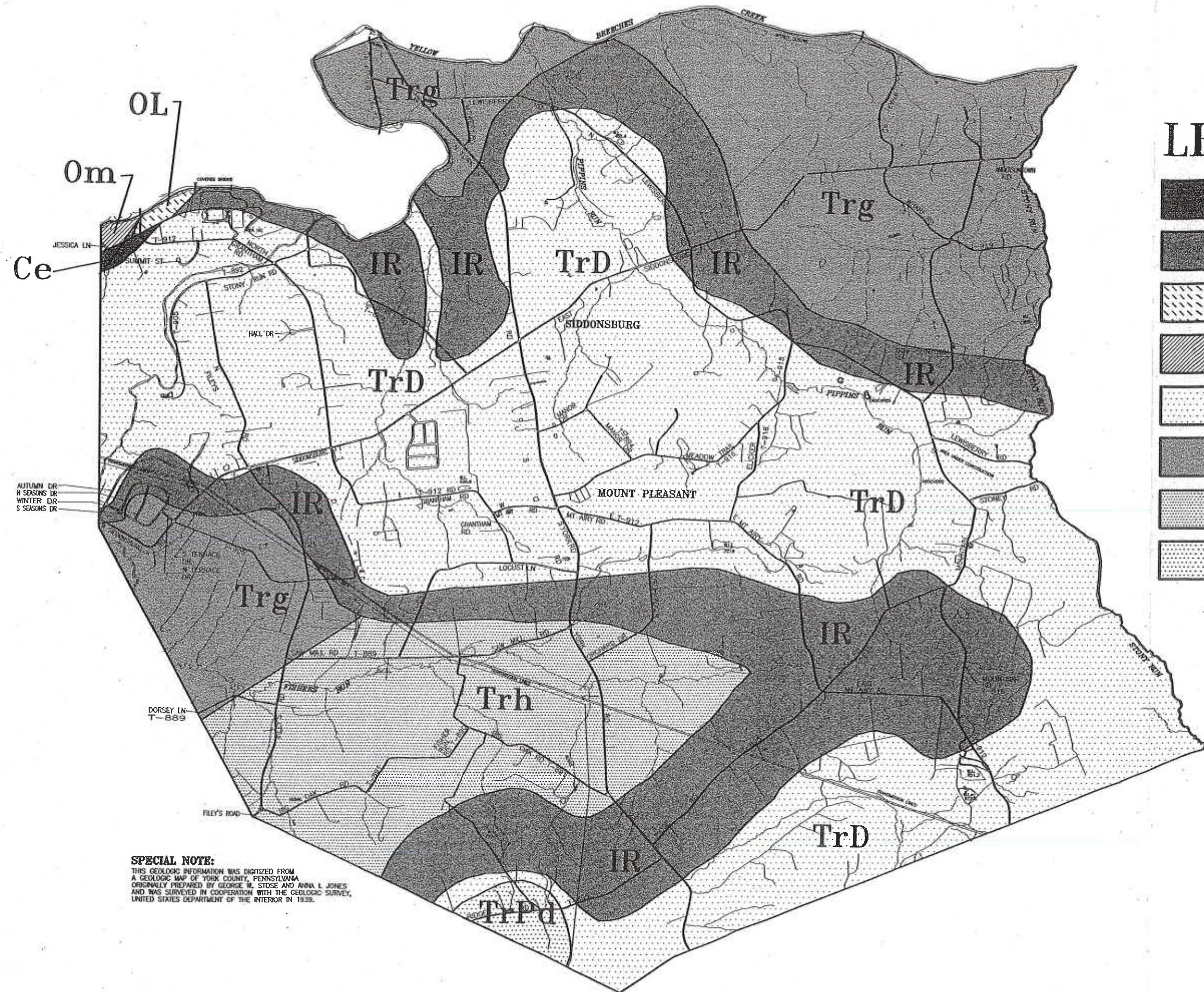
MONAGHAN TOWNSHIP,
YORK COUNTY

STEEP SLOPE MAP


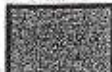






FIGURE - 22

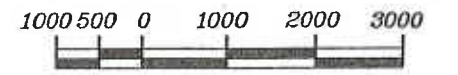
Job No.: MGTP9500006.04 Date: 12/30/99

Pennoni Associates Inc.
 Engineers • Surveyors • Planners • Landscape Architects
 704 Leburn Road, Camp Hill, PA 17011
 PH: 717-975-6481 FAX: 717-975-6480



LEGEND

-  Ce ELBROOK LIMESTONE (FINELY LAMINATED SILICEOUS LIMESTONE; WEATHERS TO AN EARTHY BUFF SOIL)
-  IR DIABASE (SILLS AND Dikes, PEGMATITIC DIABASE, A DIFFERENTIATE OF DIABASE COMPOSED OF PINK FELDSPAR AND HORNBLende)
-  OL LEESPORT LIMESTONE (THIN-BEDED ARGILLACEOUS LIMESTONE) (MARTINSBURG SHALE OVERLAPS OLDER FORMATIONS DOWN TO TOMSTOWN DOLOMITE)
-  Om MARTINSBURG SHALE
-  TrD LEESPORT LIMESTONE (THIN-BEDED ARGILLACEOUS LIMESTONE) (MARTINSBURG SHALE OVERLAPS OLDER FORMATIONS DOWN TO TOMSTOWN DOLOMITE)
-  Trg GETTYSBURG FORMATION (REDDISH-BROWN TO MAROON, SILTY MUDSTONE AND SHALE CONTAINING THIN RED SANDSTONE INTERBEDS; SEVERAL THIN BEDS OF IMPURE LIMESTONE)
-  Trh HAMMER CREEK FORMATION (REDDISH-BROWN FINE TO COARSE-GRAINED, QUARTZOSE SANDSTONE AND A FEW RED SHALE INTERBEDS)
-  TrPd DIABASE (SILLS AND Dikes, PEGMATITIC DIABASE, A DIFFERENTIATE OF DIABASE COMPOSED OF PINK FELDSPAR AND HORNBLende)




**MONAGHAN TOWNSHIP,
YORK COUNTY**

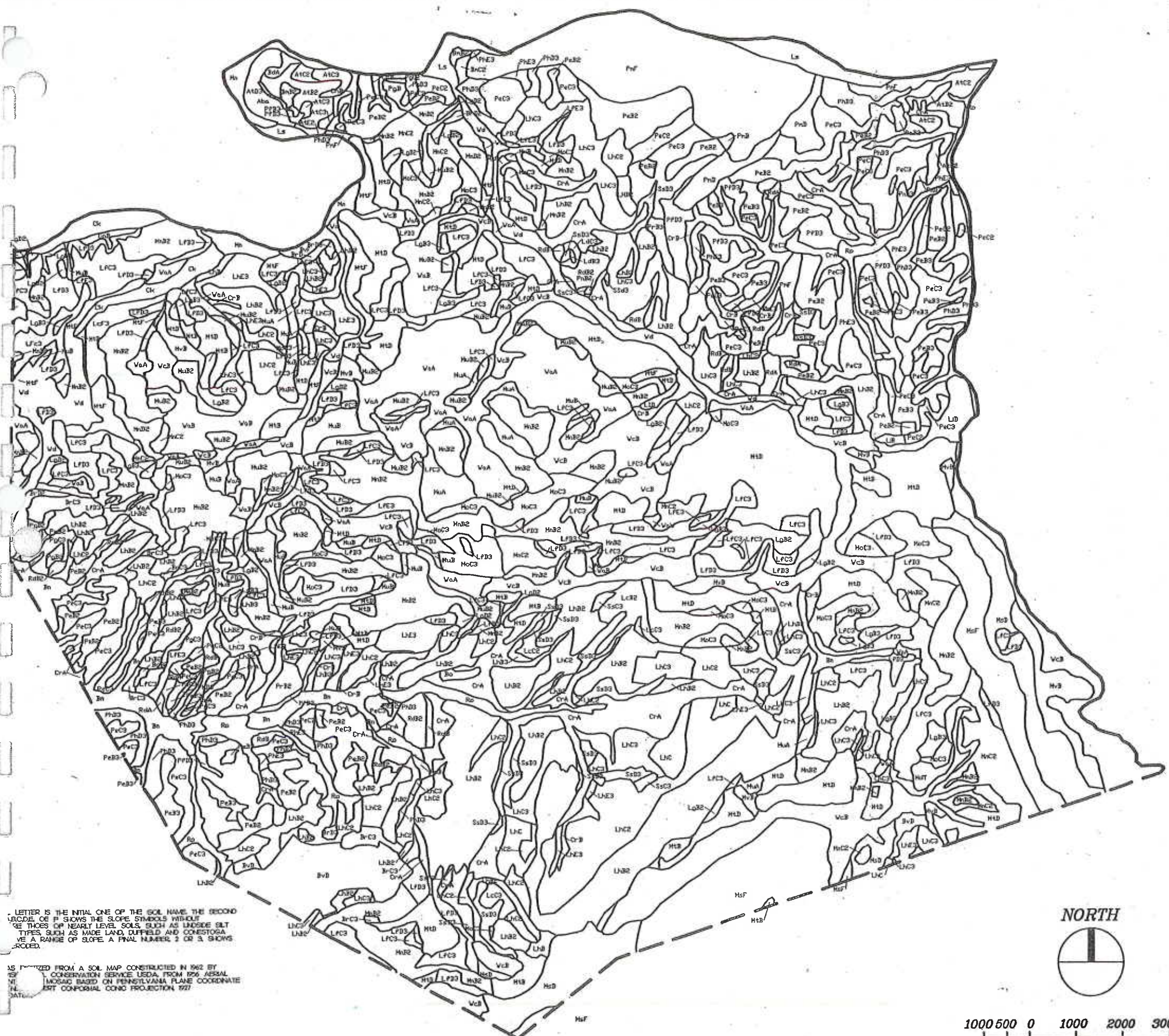
GEOLOGIC MAP

FIGURE - 23

Job No.: MGTP950006.04 Date: 12/30/99

SPECIAL NOTE:
THIS GEOLOGIC INFORMATION WAS DIGITIZED FROM A GEOLOGIC MAP OF YORK COUNTY, PENNSYLVANIA ORIGINALLY PREPARED BY GEORGE W. STOSE AND ANNA L. JONES AND WAS SURVEYED IN COOPERATION WITH THE GEOLOGIC SURVEY, UNITED STATES DEPARTMENT OF THE INTERIOR IN 1939.

Pennoni Associates Inc.
Engineers • Surveyors • Planners • Landscape Architects
 704 Leburn Road, Camp Hill, PA 17011
PH: 717-975-6481 FAX: 717-975-6480



LEGEND

ANA	ASHTON LOAM, 0 TO 3 PERCENT SLOPES
ANB	ASHTON LOAM AND SILT LOAM, 3 TO 5 PERCENT SLOPES, MODERATELY ERODED
ANC	ASHTON LOAM AND SILT LOAM, 5 TO 15 PERCENT SLOPES, MODERATELY ERODED
AND	ASHTON LOAM AND SILT LOAM, 5 TO 25 PERCENT SLOPES, SEVERELY ERODED
ANE	ASHTON LOAM AND SILT LOAM, 15 TO 25 PERCENT SLOPES, SEVERELY ERODED
ANF	ASHTON LOAM AND SILT LOAM, 25 TO 35 PERCENT SLOPES, MODERATELY ERODED
BA	BEDFORD SILT LOAM, 0 TO 3 PERCENT SLOPES
BAE	BEDFORD SILT LOAM, 3 TO 8 PERCENT SLOPES, MODERATELY ERODED
BAF	BEDFORD SILT LOAM, 8 TO 15 PERCENT SLOPES, MODERATELY ERODED
BG	BOWMANVILLE SILT LOAM, LOCAL ALLUVIUM
BH	BRECKNOCK CHANNERY SILT LOAM, 3 TO 8 PERCENT SLOPES, MODERATELY ERODED
BH2	BRECKNOCK CHANNERY SILT LOAM, 8 TO 15 PERCENT SLOPES, SEVERELY ERODED
BO	BRECKNOCK CHANNERY SILT LOAM, 15 TO 25 PERCENT SLOPES
BO2	BRECKNOCK CHANNERY SILT LOAM, 15 TO 25 PERCENT SLOPES, MODERATELY ERODED
BO3	BRECKNOCK CHANNERY SILT LOAM, 15 TO 25 PERCENT SLOPES, SEVERELY ERODED
BO4	BRECKNOCK CHANNERY SILT LOAM, 15 TO 25 PERCENT SLOPES, SEVERELY ERODED
BP	BRECKNOCK VERY STONY SILT LOAM, 8 TO 25 PERCENT SLOPES
BP2	BRECKNOCK VERY STONY SILT LOAM, 25 TO 35 PERCENT SLOPES
CB	CHESTER SILT LOAM, 3 TO 8 PERCENT SLOPES
CA	CHRYSLER SILT LOAM
CA2	CROTON SILT LOAM, 0 TO 3 PERCENT SLOPES
CA3	CROTON SILT LOAM, 3 TO 5 PERCENT SLOPES
CA4	CROTON SILT LOAM, 5 TO 8 PERCENT SLOPES
CA5	CROTON SILT LOAM, 8 TO 15 PERCENT SLOPES
CA6	CROTON SILT LOAM, 15 TO 25 PERCENT SLOPES, MODERATELY ERODED
CA7	CROTON SILT LOAM, 15 TO 25 PERCENT SLOPES, MODERATELY ERODED
CA8	CROTON SILT LOAM, 15 TO 25 PERCENT SLOPES, MODERATELY ERODED
CA9	CROTON SILT LOAM, 15 TO 25 PERCENT SLOPES, MODERATELY ERODED
CA10	CROTON SILT LOAM, 15 TO 25 PERCENT SLOPES, MODERATELY ERODED
CA11	CROTON SILT LOAM, 15 TO 25 PERCENT SLOPES, MODERATELY ERODED
CA12	CROTON SILT LOAM, 15 TO 25 PERCENT SLOPES, MODERATELY ERODED
CA13	CROTON SILT LOAM, 15 TO 25 PERCENT SLOPES, MODERATELY ERODED
CA14	CROTON SILT LOAM, 15 TO 25 PERCENT SLOPES, MODERATELY ERODED
CA15	CROTON SILT LOAM, 15 TO 25 PERCENT SLOPES, MODERATELY ERODED
CA16	CROTON SILT LOAM, 15 TO 25 PERCENT SLOPES, MODERATELY ERODED
CA17	CROTON SILT LOAM, 15 TO 25 PERCENT SLOPES, MODERATELY ERODED
CA18	CROTON SILT LOAM, 15 TO 25 PERCENT SLOPES, MODERATELY ERODED
CA19	CROTON SILT LOAM, 15 TO 25 PERCENT SLOPES, MODERATELY ERODED
CA20	CROTON SILT LOAM, 15 TO 25 PERCENT SLOPES, MODERATELY ERODED
CA21	CROTON SILT LOAM, 15 TO 25 PERCENT SLOPES, MODERATELY ERODED
CA22	CROTON SILT LOAM, 15 TO 25 PERCENT SLOPES, MODERATELY ERODED
CA23	CROTON SILT LOAM, 15 TO 25 PERCENT SLOPES, MODERATELY ERODED
CA24	CROTON SILT LOAM, 15 TO 25 PERCENT SLOPES, MODERATELY ERODED
CA25	CROTON SILT LOAM, 15 TO 25 PERCENT SLOPES, MODERATELY ERODED
CA26	CROTON SILT LOAM, 15 TO 25 PERCENT SLOPES, MODERATELY ERODED
CA27	CROTON SILT LOAM, 15 TO 25 PERCENT SLOPES, MODERATELY ERODED
CA28	CROTON SILT LOAM, 15 TO 25 PERCENT SLOPES, MODERATELY ERODED
CA29	CROTON SILT LOAM, 15 TO 25 PERCENT SLOPES, MODERATELY ERODED
CA30	CROTON SILT LOAM, 15 TO 25 PERCENT SLOPES, MODERATELY ERODED
CA31	CROTON SILT LOAM, 15 TO 25 PERCENT SLOPES, MODERATELY ERODED
CA32	CROTON SILT LOAM, 15 TO 25 PERCENT SLOPES, MODERATELY ERODED
CA33	CROTON SILT LOAM, 15 TO 25 PERCENT SLOPES, MODERATELY ERODED
CA34	CROTON SILT LOAM, 15 TO 25 PERCENT SLOPES, MODERATELY ERODED
CA35	CROTON SILT LOAM, 15 TO 25 PERCENT SLOPES, MODERATELY ERODED
CA36	CROTON SILT LOAM, 15 TO 25 PERCENT SLOPES, MODERATELY ERODED
CA37	CROTON SILT LOAM, 15 TO 25 PERCENT SLOPES, MODERATELY ERODED
CA38	CROTON SILT LOAM, 15 TO 25 PERCENT SLOPES, MODERATELY ERODED
CA39	CROTON SILT LOAM, 15 TO 25 PERCENT SLOPES, MODERATELY ERODED
CA40	CROTON SILT LOAM, 15 TO 25 PERCENT SLOPES, MODERATELY ERODED
CA41	CROTON SILT LOAM, 15 TO 25 PERCENT SLOPES, MODERATELY ERODED
CA42	CROTON SILT LOAM, 15 TO 25 PERCENT SLOPES, MODERATELY ERODED
CA43	CROTON SILT LOAM, 15 TO 25 PERCENT SLOPES, MODERATELY ERODED
CA44	CROTON SILT LOAM, 15 TO 25 PERCENT SLOPES, MODERATELY ERODED
CA45	CROTON SILT LOAM, 15 TO 25 PERCENT SLOPES, MODERATELY ERODED
CA46	CROTON SILT LOAM, 15 TO 25 PERCENT SLOPES, MODERATELY ERODED
CA47	CROTON SILT LOAM, 15 TO 25 PERCENT SLOPES, MODERATELY ERODED
CA48	CROTON SILT LOAM, 15 TO 25 PERCENT SLOPES, MODERATELY ERODED
CA49	CROTON SILT LOAM, 15 TO 25 PERCENT SLOPES, MODERATELY ERODED
CA50	CROTON SILT LOAM, 15 TO 25 PERCENT SLOPES, MODERATELY ERODED
CA51	CROTON SILT LOAM, 15 TO 25 PERCENT SLOPES, MODERATELY ERODED
CA52	CROTON SILT LOAM, 15 TO 25 PERCENT SLOPES, MODERATELY ERODED
CA53	CROTON SILT LOAM, 15 TO 25 PERCENT SLOPES, MODERATELY ERODED
CA54	CROTON SILT LOAM, 15 TO 25 PERCENT SLOPES, MODERATELY ERODED
CA55	CROTON SILT LOAM, 15 TO 25 PERCENT SLOPES, MODERATELY ERODED
CA56	CROTON SILT LOAM, 15 TO 25 PERCENT SLOPES, MODERATELY ERODED
CA57	CROTON SILT LOAM, 15 TO 25 PERCENT SLOPES, MODERATELY ERODED
CA58	CROTON SILT LOAM, 15 TO 25 PERCENT SLOPES, MODERATELY ERODED
CA59	CROTON SILT LOAM, 15 TO 25 PERCENT SLOPES, MODERATELY ERODED
CA60	CROTON SILT LOAM, 15 TO 25 PERCENT SLOPES, MODERATELY ERODED
CA61	CROTON SILT LOAM, 15 TO 25 PERCENT SLOPES, MODERATELY ERODED
CA62	CROTON SILT LOAM, 15 TO 25 PERCENT SLOPES, MODERATELY ERODED
CA63	CROTON SILT LOAM, 15 TO 25 PERCENT SLOPES, MODERATELY ERODED
CA64	CROTON SILT LOAM, 15 TO 25 PERCENT SLOPES, MODERATELY ERODED
CA65	CROTON SILT LOAM, 15 TO 25 PERCENT SLOPES, MODERATELY ERODED
CA66	CROTON SILT LOAM, 15 TO 25 PERCENT SLOPES, MODERATELY ERODED
CA67	CROTON SILT LOAM, 15 TO 25 PERCENT SLOPES, MODERATELY ERODED
CA68	CROTON SILT LOAM, 15 TO 25 PERCENT SLOPES, MODERATELY ERODED
CA69	CROTON SILT LOAM, 15 TO 25 PERCENT SLOPES, MODERATELY ERODED
CA70	CROTON SILT LOAM, 15 TO 25 PERCENT SLOPES, MODERATELY ERODED
CA71	CROTON SILT LOAM, 15 TO 25 PERCENT SLOPES, MODERATELY ERODED
CA72	CROTON SILT LOAM, 15 TO 25 PERCENT SLOPES, MODERATELY ERODED
CA73	CROTON SILT LOAM, 15 TO 25 PERCENT SLOPES, MODERATELY ERODED
CA74	CROTON SILT LOAM, 15 TO 25 PERCENT SLOPES, MODERATELY ERODED
CA75	CROTON SILT LOAM, 15 TO 25 PERCENT SLOPES, MODERATELY ERODED
CA76	CROTON SILT LOAM, 15 TO 25 PERCENT SLOPES, MODERATELY ERODED
CA77	CROTON SILT LOAM, 15 TO 25 PERCENT SLOPES, MODERATELY ERODED
CA78	CROTON SILT LOAM, 15 TO 25 PERCENT SLOPES, MODERATELY ERODED
CA79	CROTON SILT LOAM, 15 TO 25 PERCENT SLOPES, MODERATELY ERODED
CA80	CROTON SILT LOAM, 15 TO 25 PERCENT SLOPES, MODERATELY ERODED
CA81	CROTON SILT LOAM, 15 TO 25 PERCENT SLOPES, MODERATELY ERODED
CA82	CROTON SILT LOAM, 15 TO 25 PERCENT SLOPES, MODERATELY ERODED
CA83	CROTON SILT LOAM, 15 TO 25 PERCENT SLOPES, MODERATELY ERODED
CA84	CROTON SILT LOAM, 15 TO 25 PERCENT SLOPES, MODERATELY ERODED
CA85	CROTON SILT LOAM, 15 TO 25 PERCENT SLOPES, MODERATELY ERODED
CA86	CROTON SILT LOAM, 15 TO 25 PERCENT SLOPES, MODERATELY ERODED
CA87	CROTON SILT LOAM, 15 TO 25 PERCENT SLOPES, MODERATELY ERODED
CA88	CROTON SILT LOAM, 15 TO 25 PERCENT SLOPES, MODERATELY ERODED
CA89	CROTON SILT LOAM, 15 TO 25 PERCENT SLOPES, MODERATELY ERODED
CA90	CROTON SILT LOAM, 15 TO 25 PERCENT SLOPES, MODERATELY ERODED
CA91	CROTON SILT LOAM, 15 TO 25 PERCENT SLOPES, MODERATELY ERODED
CA92	CROTON SILT LOAM, 15 TO 25 PERCENT SLOPES, MODERATELY ERODED
CA93	CROTON SILT LOAM, 15 TO 25 PERCENT SLOPES, MODERATELY ERODED
CA94	CROTON SILT LOAM, 15 TO 25 PERCENT SLOPES, MODERATELY ERODED
CA95	CROTON SILT LOAM, 15 TO 25 PERCENT SLOPES, MODERATELY ERODED
CA96	CROTON SILT LOAM, 15 TO 25 PERCENT SLOPES, MODERATELY ERODED
CA97	CROTON SILT LOAM, 15 TO 25 PERCENT SLOPES, MODERATELY ERODED
CA98	CROTON SILT LOAM, 15 TO 25 PERCENT SLOPES, MODERATELY ERODED
CA99	CROTON SILT LOAM, 15 TO 25 PERCENT SLOPES, MODERATELY ERODED
CA100	CROTON SILT LOAM, 15 TO 25 PERCENT SLOPES, MODERATELY ERODED

LETTER IS THE INITIAL ONE OF THE SOIL NAME THE SECOND LETTER OF IT SHOWS THE SLOPE SYMBOLS WITHOUT THE THOSE OF NEARLY LEVEL SOILS, SUCH AS UNDEVELOPED SILT TYPES, SUCH AS MADE LAND, CUPFIELD AND CONESTOGA. A RANGE OF SLOPE, A FINAL NUMBER, 1 OR 3, SHOWS ERODED.

AS ADAPTED FROM A SOIL MAP CONSTRUCTED IN 1962 BY THE CONSERVATION SERVICE USDA, FROM 1956 AERIAL PHOTOGRAPHS. MODIFIED BY PENNONI ASSOCIATES INC. BASED ON PENNSYLVANIA PLANE COORDINATE SYSTEM, UTM ZONE 18N, CONFORMAL CONIC PROJECTION, 1983.



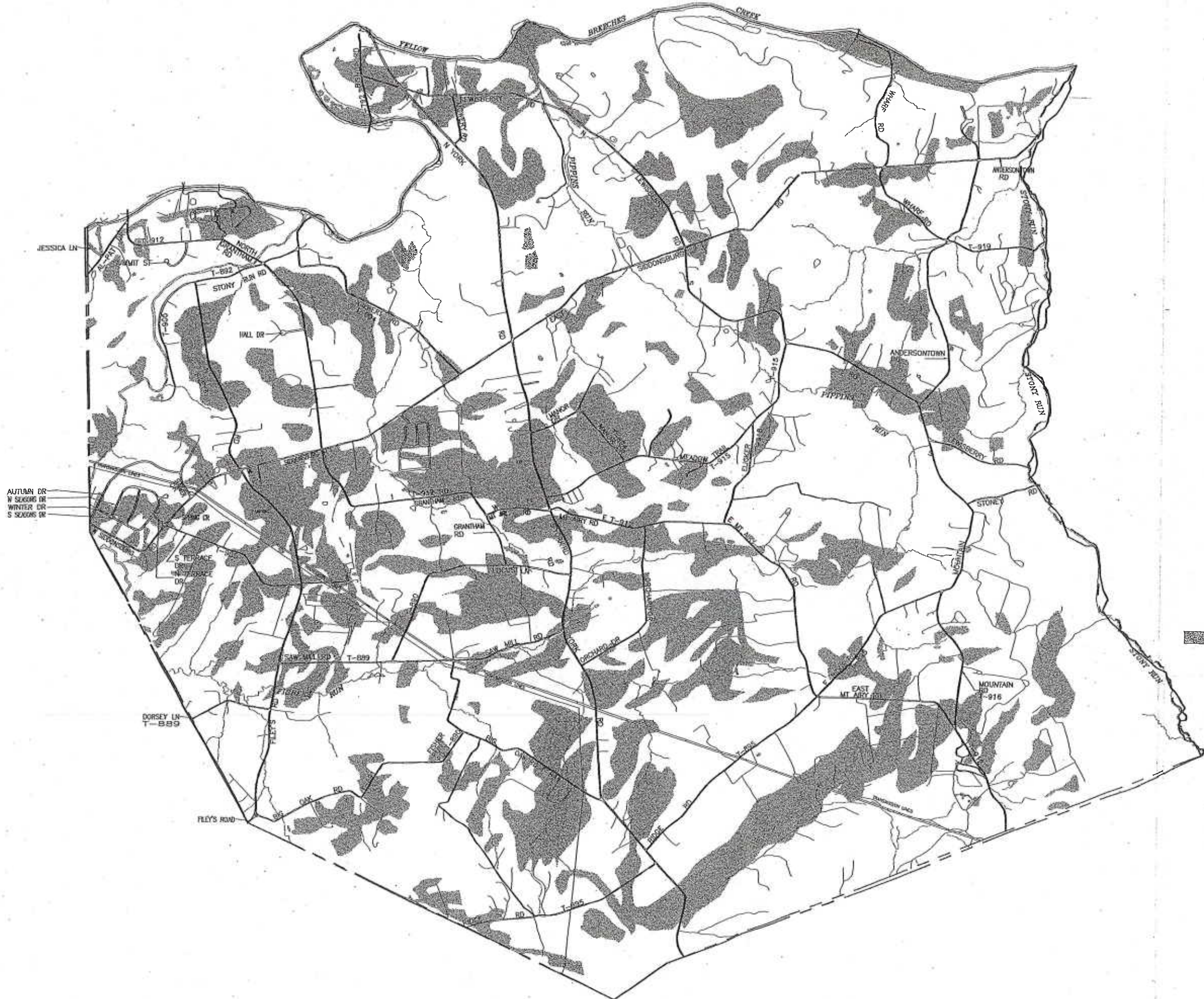
**MONAGHAN TOWNSHIP,
YORK COUNTY**

SOILS MAP

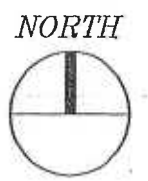
FIGURE 24

Job No.: MGT9500008.04

Pennonni Associates Inc.
 Engineers • Surveyors • Planners • Landscape Architects
 704 Leburn Road, Camp Hill, PA 17011
 TEL 717-676-6481 FAX 717-676-6480



PRIME AGRICULTURAL SOILS



**MONAGHAN TOWNSHIP,
YORK COUNTY**

**PRIME AGRICULTURAL
SOILS**

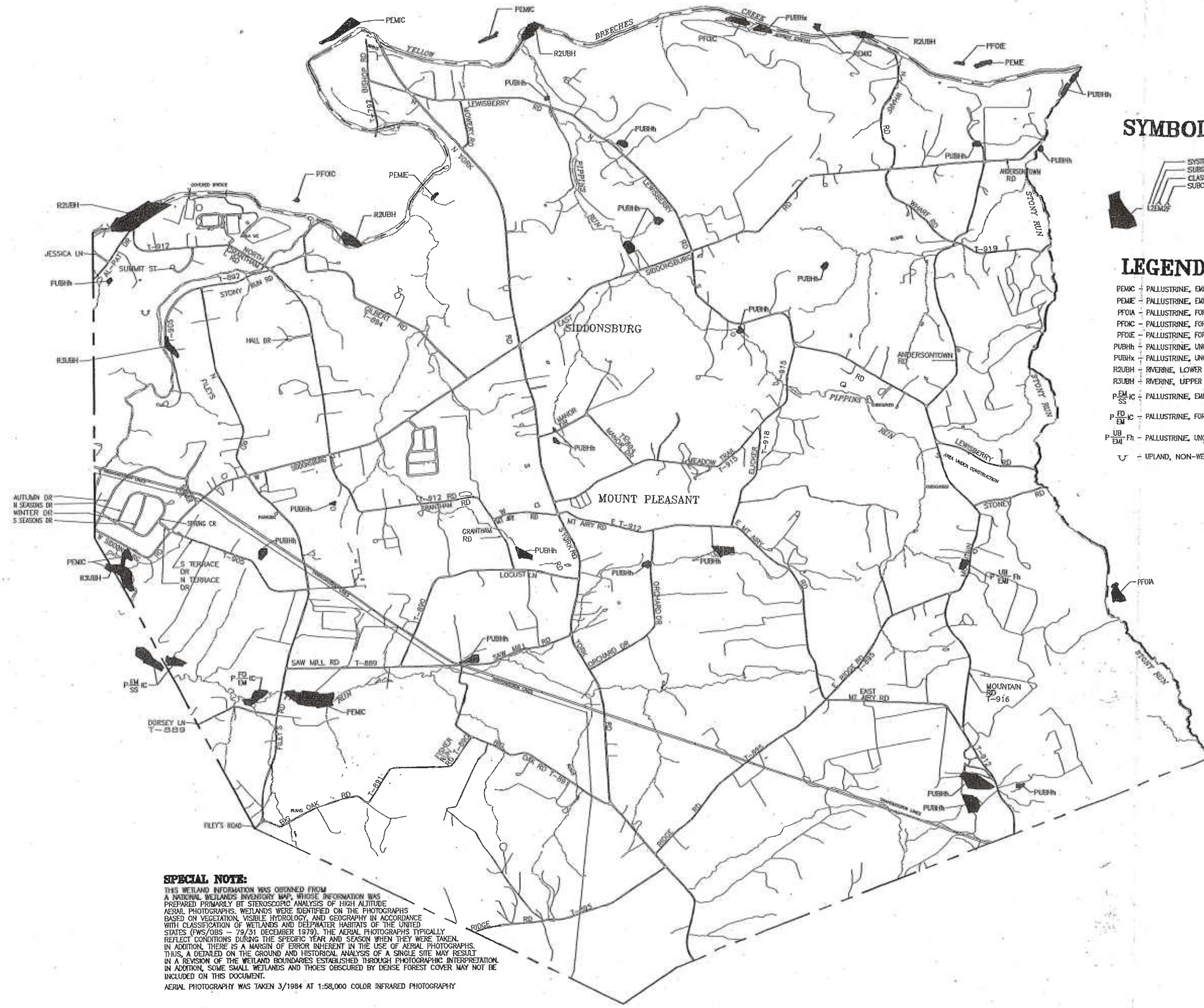
FIGURE 25

Job No.: MGTP9500006.04

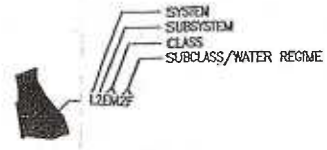
Date: 12/30/99



Pennoni Associates Inc.
 Engineers • Surveyors • Planners • Landscape Architects
 704 Lisburn Road, Camp Hill, PA 17011
 PH: 717-675-6481 FAX: 717-675-6480

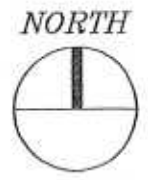


SYMBOLGY EXAMPLE



LEGEND

- Pemic - PALLUSTRINE, EMERGENT, PERSISTENT, SEASONALLY FLOODED
- Peme - PALLUSTRINE, EMERGENT, PERSISTENT, SEASONALLY FLOODED/SATURATED
- Pfoia - PALLUSTRINE, FORESTED, BROAD-LEAVED DECIDUOUS, TEMPORARILY FLOODED
- Pfoic - PALLUSTRINE, FORESTED, BROAD-LEAVED DECIDUOUS, SEASONALLY FLOODED
- Pfoie - PALLUSTRINE, FORESTED, BROAD-LEAVED DECIDUOUS, SEASONALLY FLOODED/SATURATED
- Pubhh - PALLUSTRINE, UNCONSOLIDATED BOTTOM, PERMANENTLY FLOODED, DIKED/IMPOUNDED
- Pubhx - PALLUSTRINE, UNCONSOLIDATED BOTTOM, PERMANENTLY FLOODED, EXCAVATED
- R2ubh - RIVERINE, LOWER PERENNIAL, UNCONSOLIDATED BOTTOM, PERMANENTLY FLOODED
- R3ubh - RIVERINE, UPPER PERENNIAL, UNCONSOLIDATED BOTTOM, PERMANENTLY FLOODED
- P_{EM}IC - PALLUSTRINE, EMERGENT, SCRUB-SHRUB, BROAD-LEAVED DECIDUOUS, SEASONALLY FLOODED
- P_{EM}IC - PALLUSTRINE, FORESTED, EMERGENT, PERSISTENT, SEASONALLY FLOODED
- P_{EM}Fh - PALLUSTRINE, UNCONSOLIDATED BOTTOM, EMERGENT, PERSISTENT, SEMIPERMANENTLY FLOODED, DIKED/IMPOUNDED
- U - UPLAND, NON-WETLAND



**MONAGHAN TOWNSHIP,
YORK COUNTY**

**WETLANDS INVENTORY
MAP**

FIGURE 2.6

Job No.: MGTP950006.04

Date: 12/30/99

SPECIAL NOTE:
THIS WETLAND INFORMATION WAS OBTAINED FROM A NATIONAL WETLANDS INVENTORY MAP, WHOSE INFORMATION WAS PREPARED PRIMARILY BY STEREOSCOPIC ANALYSIS OF HIGH ALTITUDE AERIAL PHOTOGRAPHS. WETLANDS WERE IDENTIFIED ON THE PHOTOGRAPHS BASED ON VEGETATION, VISIBLE HYDROLOGY, AND GEOGRAPHY IN ACCORDANCE WITH CLASSIFICATION OF WETLANDS AND DEEPWATER HABITATS OF THE UNITED STATES (FWS/OBS - 79/31 DECEMBER 1979). THE AERIAL PHOTOGRAPHS TYPICALLY REFLECT CONDITIONS DURING THE SPECIFIC YEAR AND SEASON WHEN THEY WERE TAKEN. IN ADDITION, THERE IS A MARGIN OF ERROR INHERENT IN THE USE OF AERIAL PHOTOGRAPHS. THUS, A DETAILED ON THE GROUND AND HISTORICAL ANALYSIS OF A SINGLE SITE MAY RESULT IN A REVISION OF THE WETLAND BOUNDARIES ESTABLISHED THROUGH PHOTOGRAPHIC INTERPRETATION. IN ADDITION, SOME SMALL WETLANDS AND THOSE OBSCURED BY DENSE FOREST COVER MAY NOT BE INCLUDED ON THIS DOCUMENT.
AERIAL PHOTOGRAPHY WAS TAKEN 3/1984 AT 1:58,000 COLOR INFRARED PHOTOGRAPHY

Pennoni Associates Inc.
Engineers • Surveyors • Planners • Landscape Architects
704 Lsburn Road, Camp Hill, PA 17011
PH: 717-875-6481 FAX: 717-875-6480